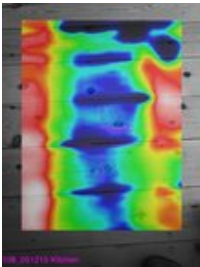




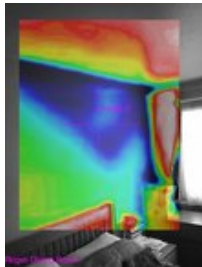
CHEESE.

Cold Homes Energy Efficiency Survey Experts

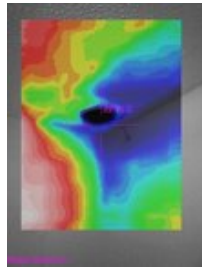
Save money and improve the comfort and energy efficiency of your home!



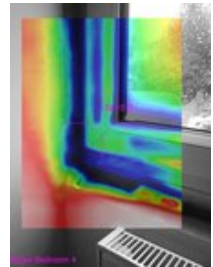
Draughts between floorboards



Missing cavity wall insulation



Cold bathroom vent



Poorly fitted window

Through your local community, you can have an internal energy-loss survey of your house.

A local non-profit project called CHEESE (**C**old **H**omes **E**nergy **E**fficiency **S**urvey **E**xperts) can reveal faults and help you to decide how best to reduce your energy use and cut your fuel bills.

CHEESE uses thermal imaging to identify heat loss from draughts and poor insulation, and can suggest remedies, many of which are cheap and easy to implement, and may be suitable even if you don't own your home. After a survey, you are supplied with a video and verbal report, and an energy monitoring and action pack. A modest charge is made, depending on the size of your home, to help with costs. But -

Surveys are FREE to low-income households.

www.cheeseproject.co.uk



The CHEESE Project survey procedure

On a cold day, your house is heated overnight to ten degrees above the outside temperature, then an extractor fan is fitted to one external door to reduce the internal pressure and to draw in cold air. The house is surveyed with a thermal-imaging camera to reveal cold spots caused by poor insulation and draughts. You accompany the surveyor with a tablet screen to view the thermal images and see first-hand what is found. A video is recorded of the thermal images together with the commentary and the surveyor's answers to your questions. (If you are on a low income, we can help with the cost of the over-night heating.)

Householder briefing on heat loss and potential remedies

Following the survey, you are briefed on the problems and how they might be remedied, some with low-cost DIY. We leave you with a memory stick of the images and video for subsequent reviewing. The survey and briefing take about two hours, or more for a large house.

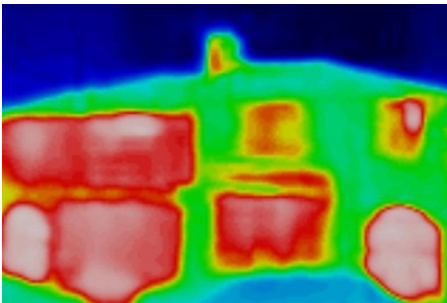
Energy monitoring and action

You can also be loaned, for two weeks, a pack containing simple-to-use meters to monitor electricity use, as well as guides for DIY energy-saving techniques. The CHEESE team will later follow-up to obtain feedback and to find out how the survey has helped you to save energy and money, and increase comfort in your home.

For more information about surveys or to apply for one:

Visit www.cheeseproject.co.uk/apply-for-a-survey

Or email surveys@cheeseproject.co.uk



You may find a thermal image of your own home on the Heatview website: www.heatview.co.uk