



**CHEESE.**

Cold Homes Energy Efficiency Survey Experts

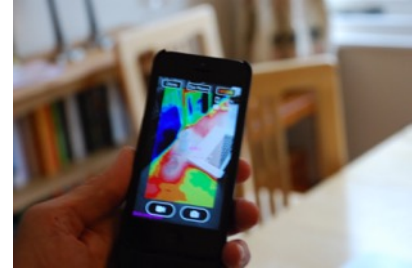
## **Brief project overview**

March 2018

[www.cheeseproject.co.uk](http://www.cheeseproject.co.uk)

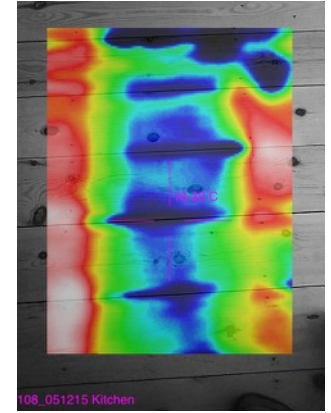
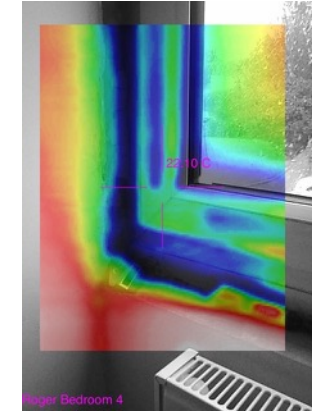
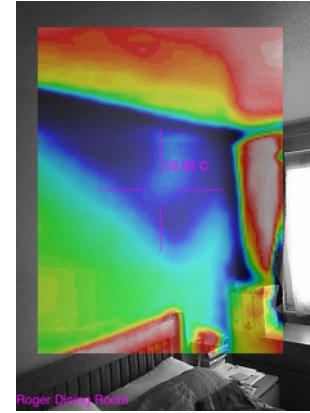
# Context

warmer home - cooler planet



- Founded in 2015 with funding from Bristol Green Capital.
- Community based, not-for profit CIC, with established reputation and trust from our clients.
- Run by a diverse team of volunteers.
- We use low-cost thermal imaging equipment to help people reduce their domestic heating losses and so:
  - Improve their wellbeing, particularly those in **fuel poverty**.
  - **Reduce climate impact** of high energy consumption (30% of UK demand).
- We use a 'Robin-Hood' model - generate revenue from paid surveys to subsidise free ones for low-income households.

# Approach



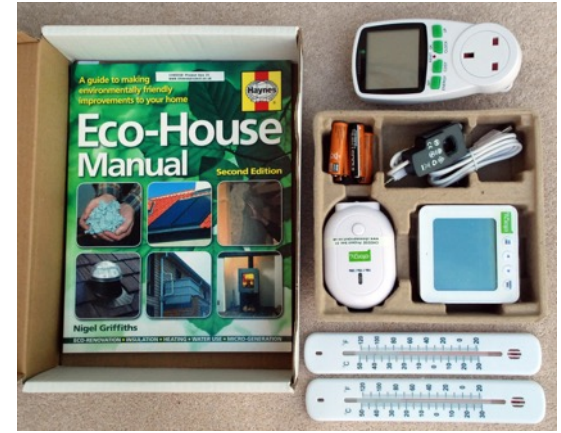
- We perform detailed thermal imaging (TI) surveys of the interior of homes showing householders, on a tablet, areas where remedial action can be taken, particularly at low cost. ‘Seeing is believing’ engagement method is five times as effective as just giving written/spoken information.<sup>1</sup>
- Low cost actions typically have a payback period of one year or less but are also crucial in engaging people with their energy use and effecting behaviour change.
- We estimate that **30% of heating losses are due to draughts**, which can be fixed cheaply and easily.<sup>2</sup>

<sup>1</sup>Matthew Fox, David Coley, Steve Goodhew, Pieter de Wilde, Thermography methodologies for detecting energy related building defects, Renewable and Sustainable Energy Reviews, Volume 40, December 2014, Pages 296-310, ISSN 1364-0321, <http://www.sciencedirect.com/science/article/pii/S1364032114006406>

<sup>2</sup>Based on TI expert Brian Harper’s experience of conducting ~400 surveys in Malvern, and confirmed by our own 130+ surveys in Bristol.

# Achievements

- We have completed three successful seasons, delivering 180 surveys (and counting), in wide-ranging building types and socioeconomic groups of householders, with detailed data recorded for each.
- Consistent very positive feedback from customers, with ~75% taking remedial action within three months.
- 20 Energy Tracer™ surveyors trained.
- Development of our own custom TI survey kit.
- National and international interest in our approach from including the US, India and Italy.





# Future development

- Continue to expand the project in Bristol.
- Grow our revenue stream to reduce reliance on grant funding.
- Make information available to the public on common faults and remedies, promoting ways of saving energy in the home.
- Aid replication of the project in other UK cities.

[www.cheeseproject.co.uk](http://www.cheeseproject.co.uk)

[info@cheeseproject.co.uk](mailto:info@cheeseproject.co.uk)

Twitter: @CHEESEBristol

